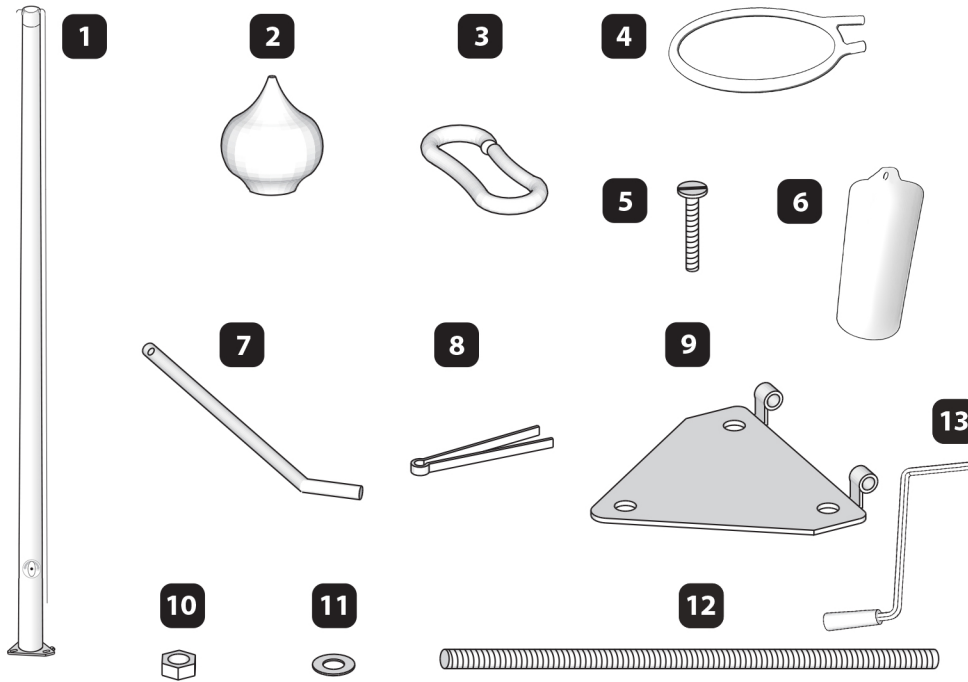




Boat and flagpole factory

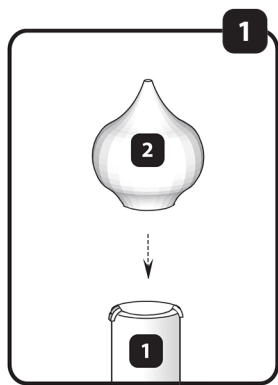


# WINCH system flagpole set

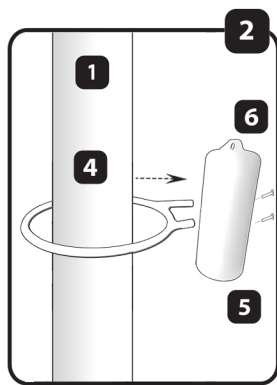


- 1** Fiberglass flagpole with galvanized steel upper part of the foot (1 pc.)
- 2** Mast nozzle (1 pc.)
- 3** Plastic loops (2 pcs.)
- 4** Counterbalance ring (1 pc.)
- 5** Counterbalance screw (1 pc.)
- 6** Counterbalance (1 pc.)
- 7** Connecting axle of mast foot (1 pc.)
- 8** Connecting axle splint (1 pc.)
- 9** Mast foot bottom plate (1 pc.)
- 10** Nuts M18 (9 pcs.)
- 11** Gaskets M18 (3 pcs.)
- 12** Threaded rods M18 (3 pcs.)
- 13** Flag raising handle (1 piece.)

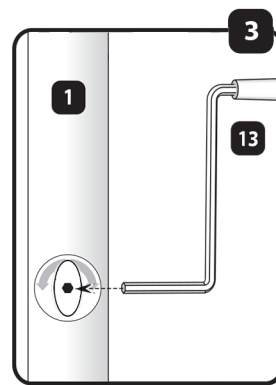
## Preparing mast



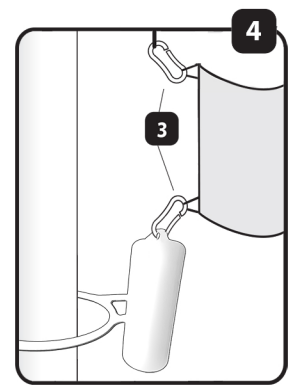
Connect nozzle (2) with rotating part built in flagpole (1), bolting or fixing it on (depending on nozzle type).



Using the screw (5), screw the counterbalance ring (4) to the counterbalance (6). Put the counterbalance on mast.



Insert flag raising handle (13) in mast opening (1).



With plastic loops (3) connect flag (optional) with string and counterbalance.



By moving handle of the winch system clockwise, flag is rising up to the top of the pole. After rising flag the handle have to be removed from the hole and thus the mechanism will fix the location of the flag.