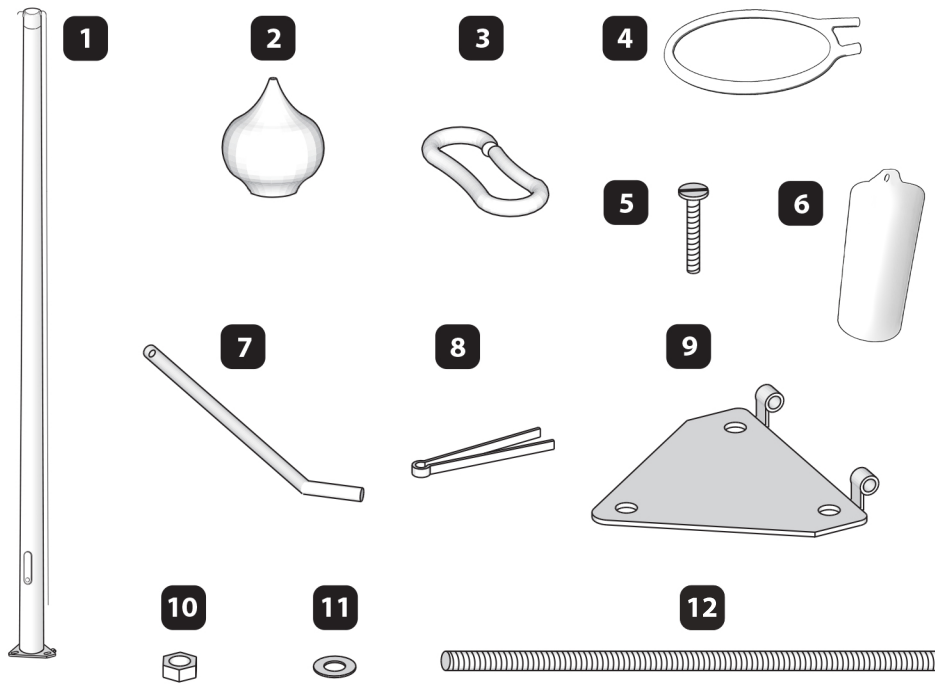




Boat and flagpole factory

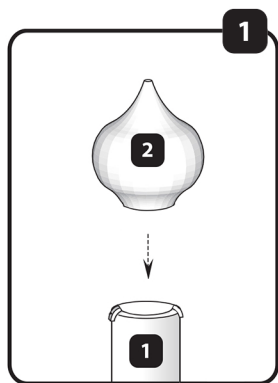


LOCK system flagpole set

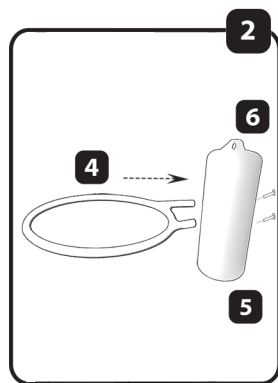


- 1** Fiberglass flagpole with galvanized steel upper part of the foot (1 pc.)
- 2** Mast nozzle (1 pc.)
- 3** Plastic loops (2 pcs.)
- 4** Counterbalance ring (1 pc.)
- 5** Counterbalance screw (1 pc.)
- 6** Counterbalance (1 pc.)
- 7** Connecting axle of mast foot (1 pc.)
- 8** Connecting axle splint (1 pc.)
- 9** Mast foot bottom plate (1 pc.)
- 10** Nuts M18 (9 pcs.)
- 11** Gaskets M18 (3 pcs.)
- 12** Threaded rods M18 (3 pcs.)

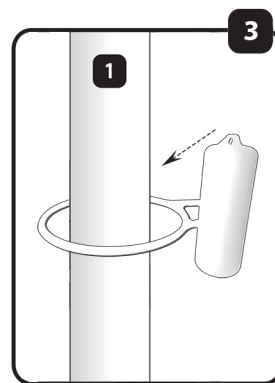
Preparing mast



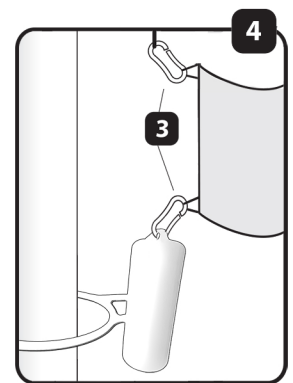
Connect nozzle (2) with rotating part built in flagpole (1), bolting or fixing it on (depending on nozzle type).



Using the screw (5), screw the counterbalance ring (4) to the counterbalance (6).



Put the counterbalance on mast.



With plastic loops (3) connect flag (optional) with string and counterbalance.



Unlock the locking tab, grab the string and pull it down until the flag is raised to the top of flagpole. Fix the string with a sprocket and left string part insert into lower mechanism opening. Place locking tab back in place and lock mechanism with the key.